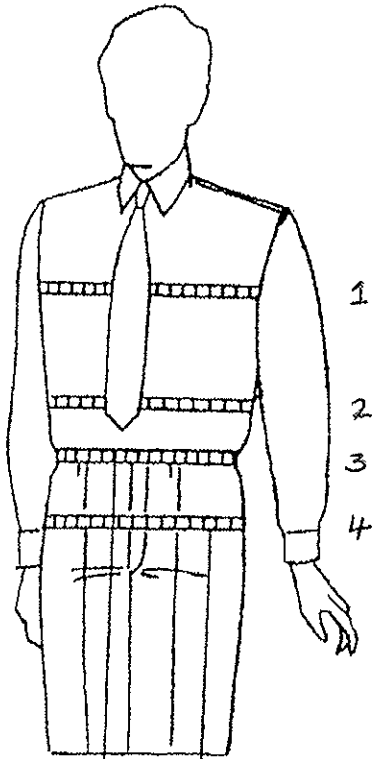


Measurements

The selection of the correct master size is crucial. It is important to select the size that best fits the chest and the shoulders. Other measurements can then be altered as explained below :

BODY MEASUREMENTS



1 - CHEST

With the customer's jacket removed, pass the tape around the fullest part of the chest and over the shoulder blades. Lower arms after positioning tape.

2 - STOMACH

Measure the stomach as its most prominent part.

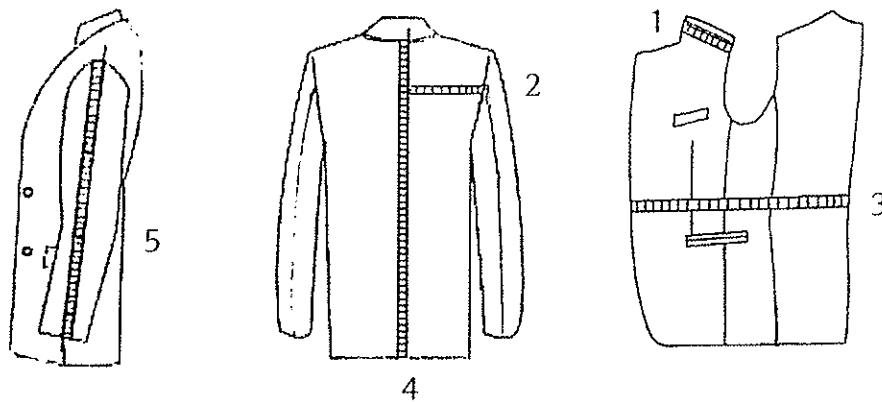
3 - WAIST

This is the trouser waist. Place the tape around the part of the waist where the customer wishes to wear the trousers and measure inside the waist band.

4 - SEAT

Instruct the customer to put his feet together. Measure the widest part of his seat .

Measurements



GARMENT MEASUREMENTS

1 - TOP SHOULDER

Measure from the neck point to the crown (please lift the collar).

2 - 1/2 BACK

Measure from the hind arm seam across the back to the centre back seam.

3 - 1/2 CIRCUMFERENCE

Measure from the centre back seam to the front edge of the jacket at the height of the waist button

- To the middle button for a 3 buttons jacket or
- To the top button for a 2 buttons jacket.

For a double breasted jacket, mention the single breasted measurement. The factory will make the necessary allowance.

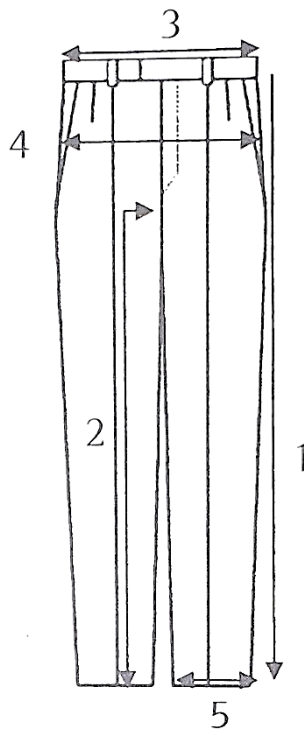
4 - JACKET LENGTH

With the jacket on the customer measure from the collar seam down along the centre back seam to the desired length of the jacket.

5 - SLEEVE LENGTH

Measure from the crown to the middle of the cuff.
Beware not to over stretch the cloth.

Measurements



1 – OUTSIDE LEG EXCLUDING WAISTBAND (TO FINISHED BOTTOM)

Ask the customer to position the waistband of his trousers at the level he wishes to wear them (on, above or below the hips). Measure down along the outside leg seam to the desired length.

2 – INSIDE LEG (TO FINISHED BOTTOM)

Measure the customer with his trousers on. Hold the tape high up the inside leg at the fork. If the current trousers are too high or too low, take this into account or ask him to pull them up/down to the desired crotch position. Then measure.

3 – ½ WAIST

This is the trouser waist. Place the tape around the part of the waist where the customer wishes to wear the trousers and measure inside the waist band.

4 – ½ SEAT

Instruct the customer to put his feet together. Measure the widest part of his seat.

5 – ½ BOTTOM WIDTH